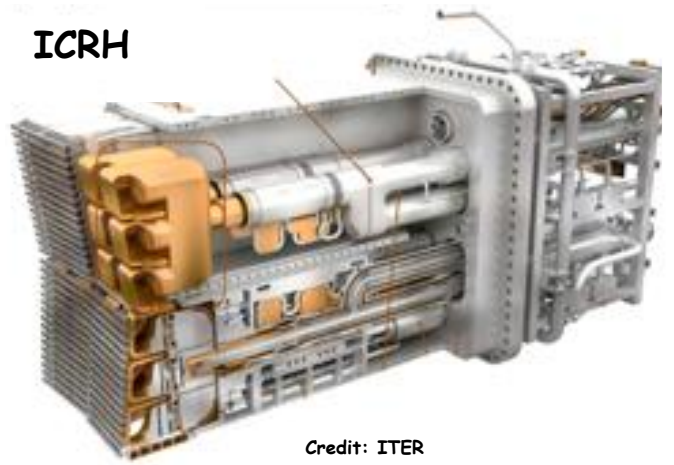
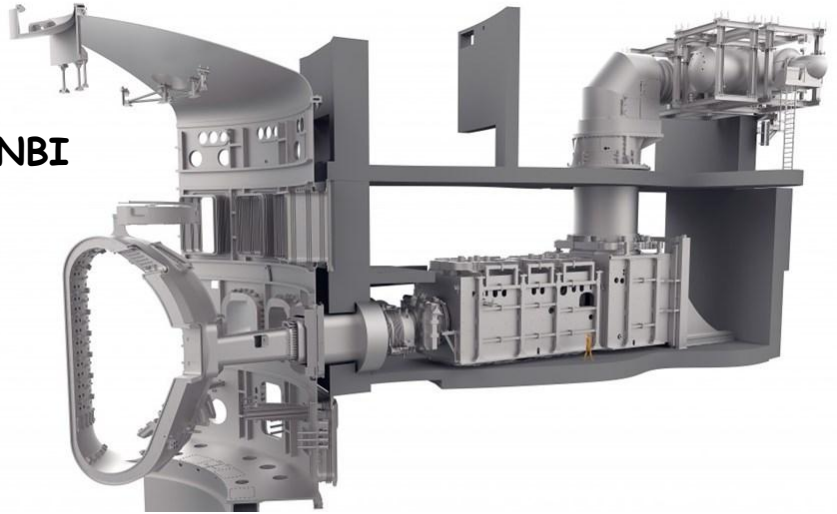


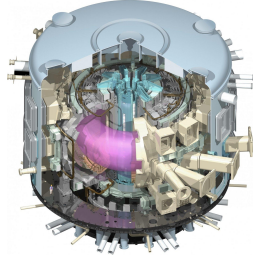
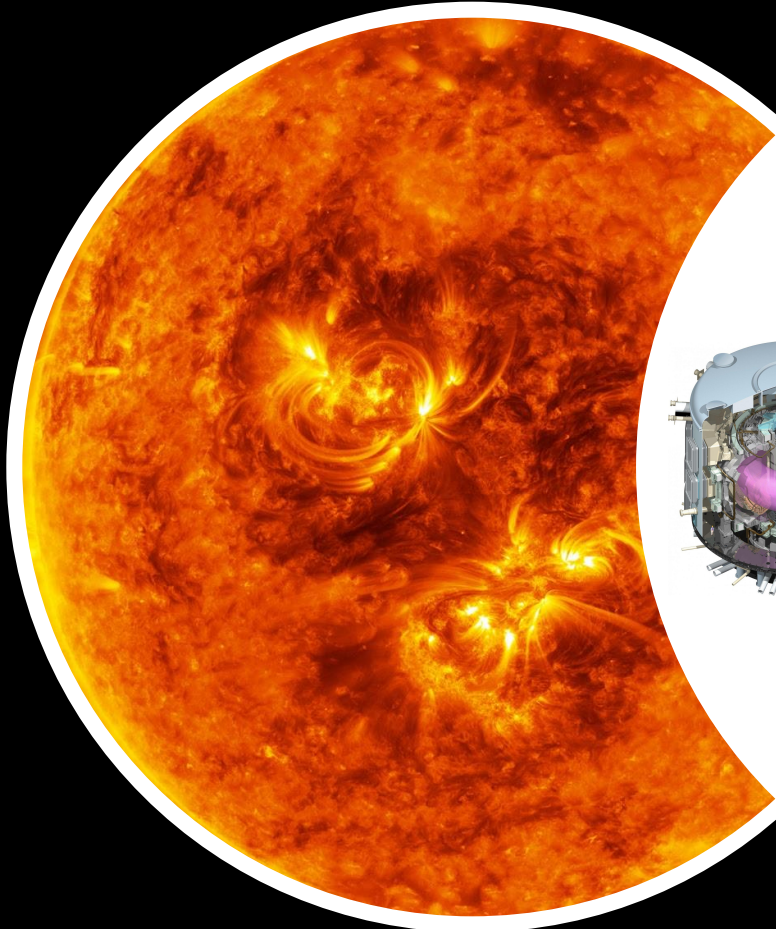
ICRH



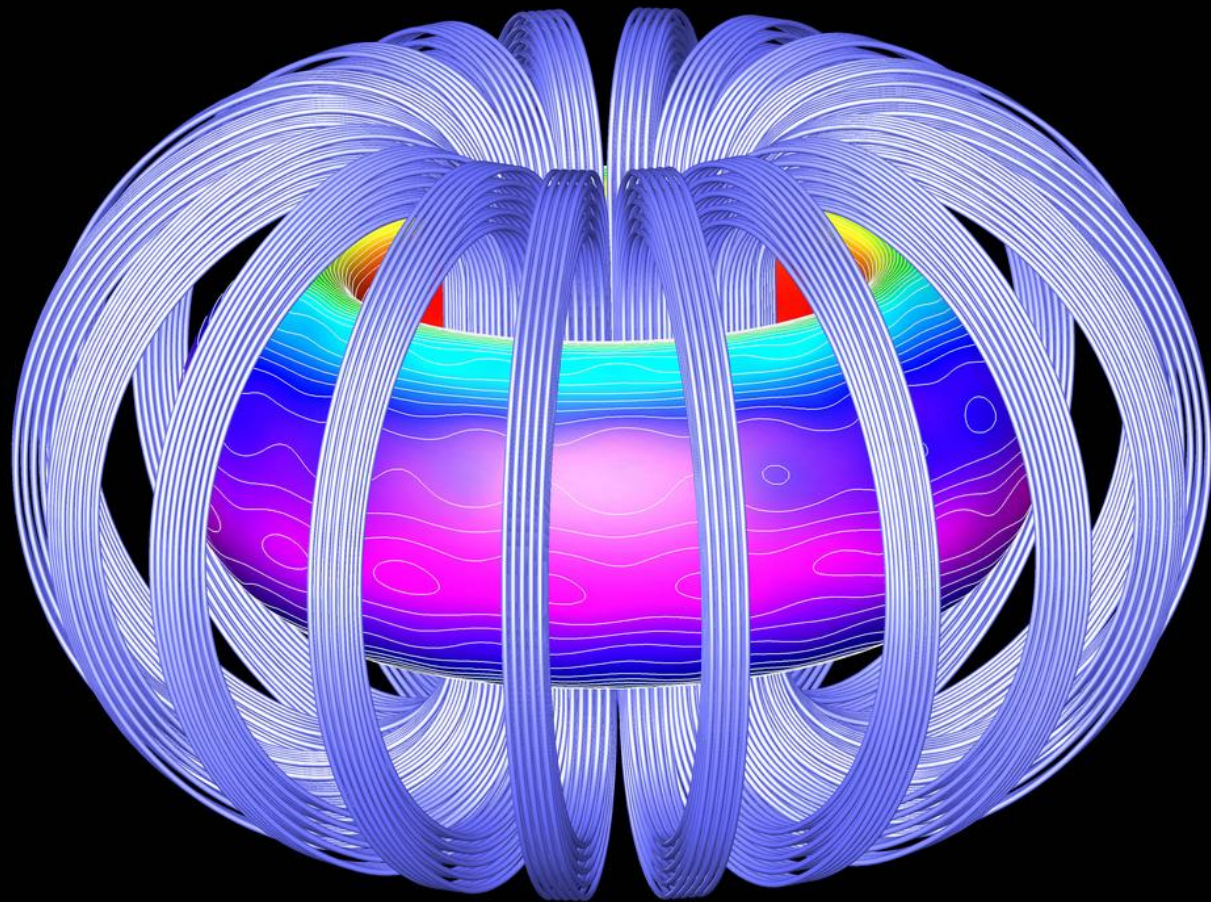
Credit: ITER

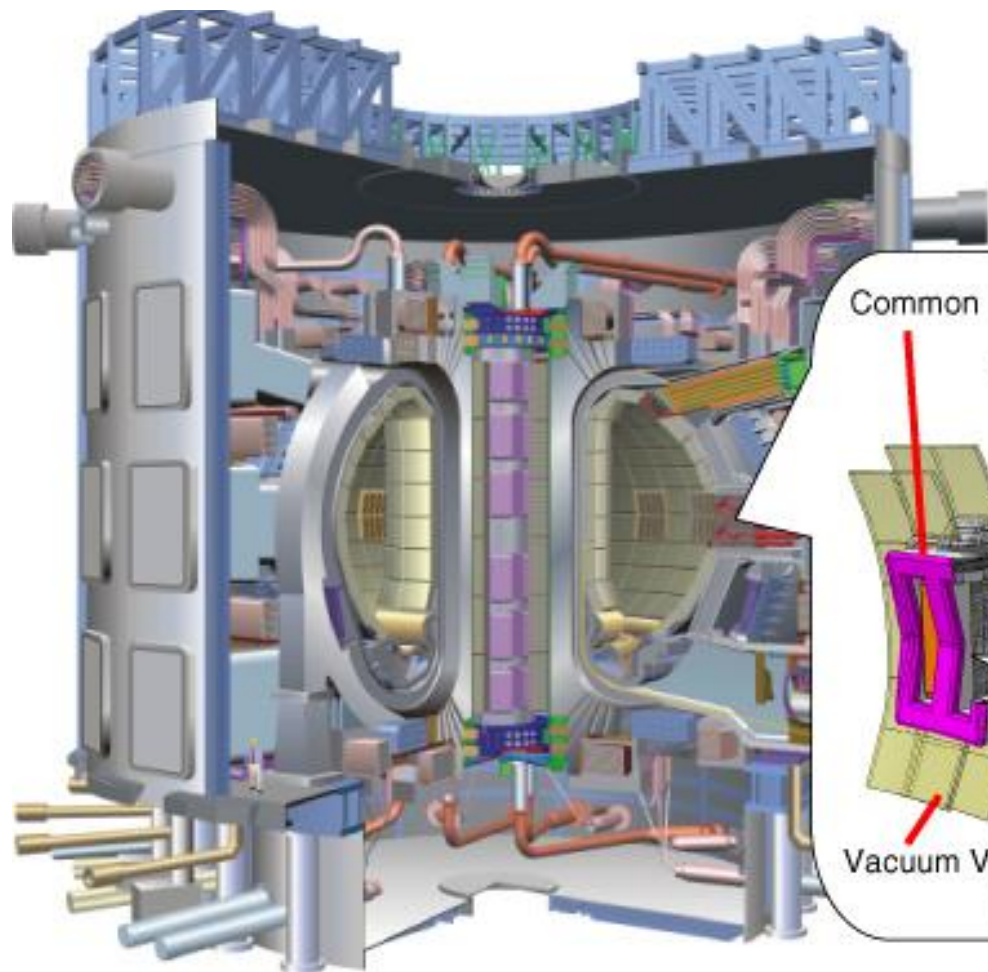
NBI







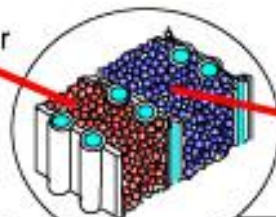




Tritium Breeder
 Li_2TiO_3

Credit: ITER

Neutron
Multiplier Be



Common Frame

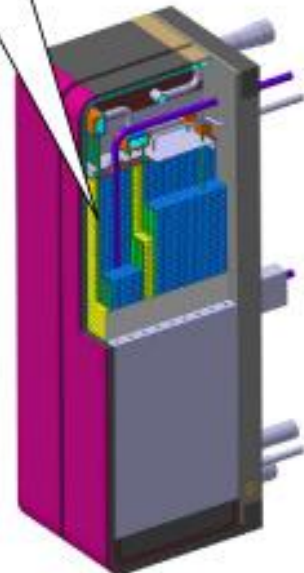
Backside Shielding
(Skelton view)

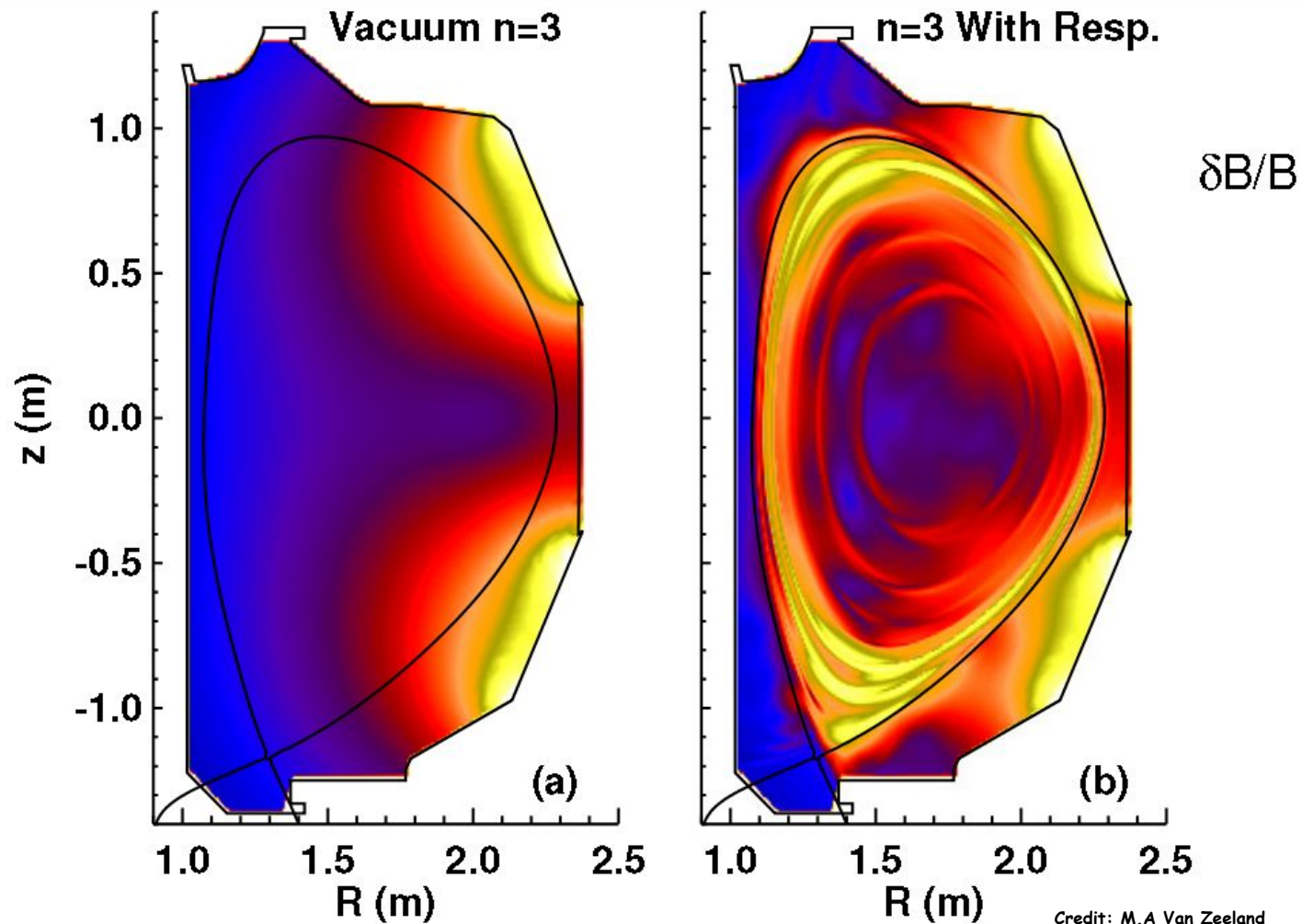


Vacuum Vessel

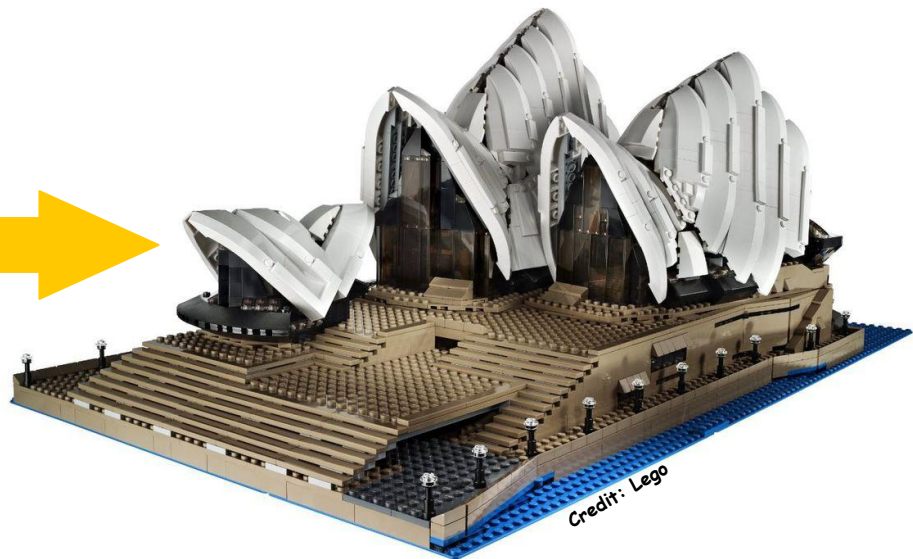
Equatorial Port

Water Cooled Solid Breeder
Test Blanket Module











Lavender Bay

McMahon's Point

Kirribilli

Milsons Point

Cremorne Poi

Dawes Point

Millers Point

The Rocks

Circular Quay

Google™

Pointer: 33° 51' 06.45" S, 151° 12' 42.50" E elev: 0 m

Image © 2008 Sinclair Knight Merz
© 2008 MapData Sciences Pty Ltd, PSMA

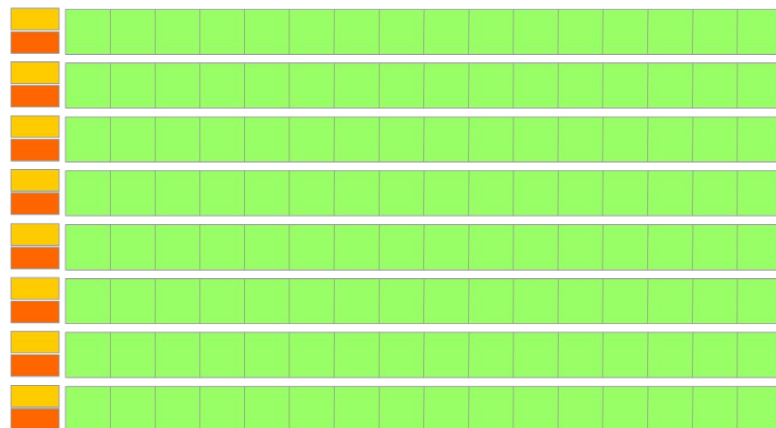
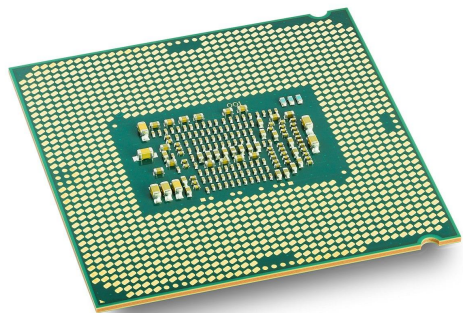
Streaming 100%

Garden Island Eye alt: 3.20 km

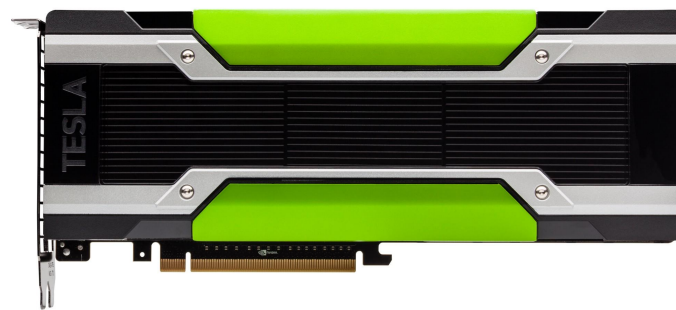




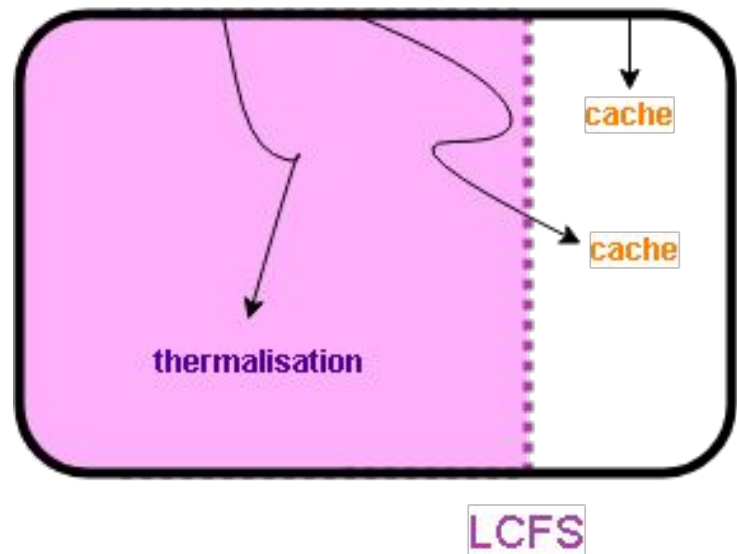
CPU



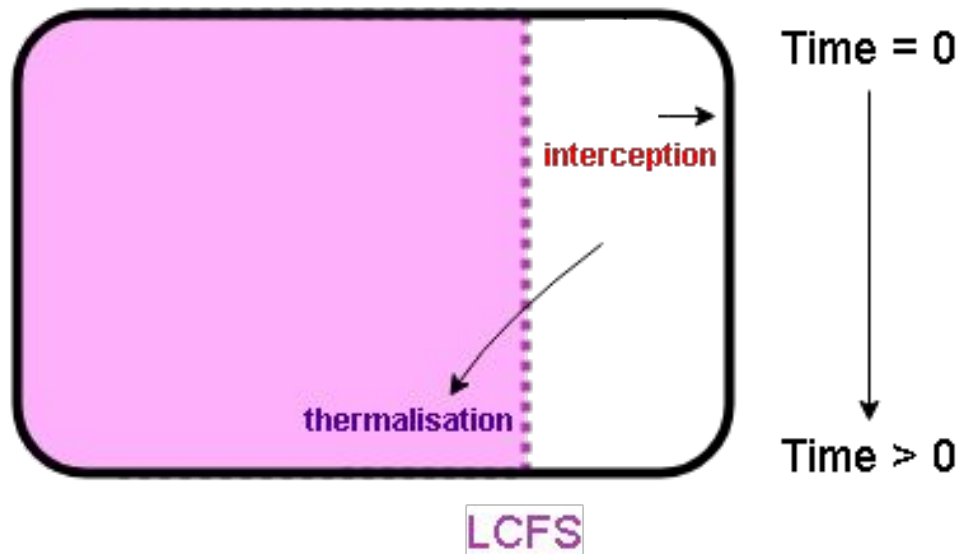
GPU

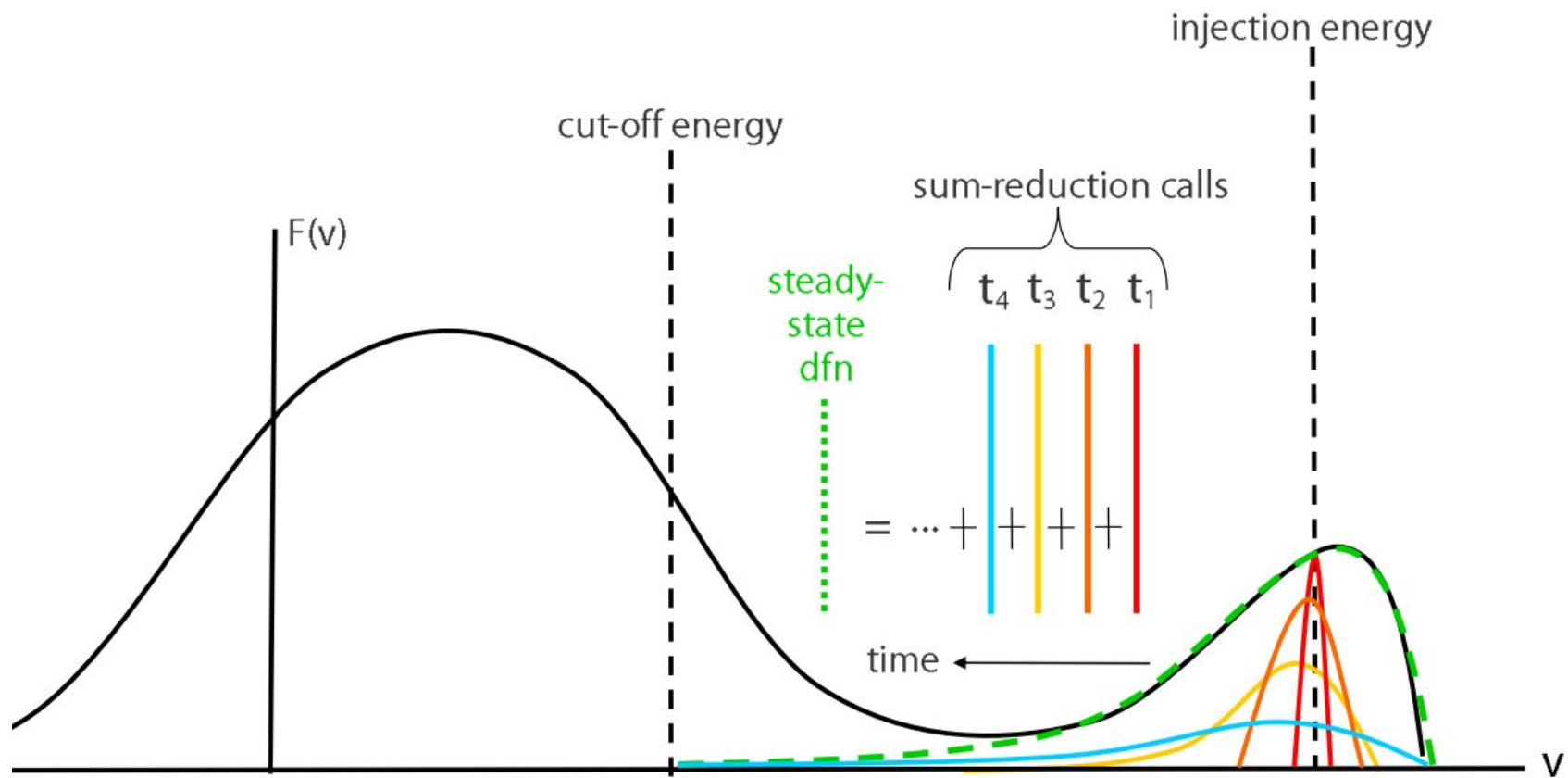


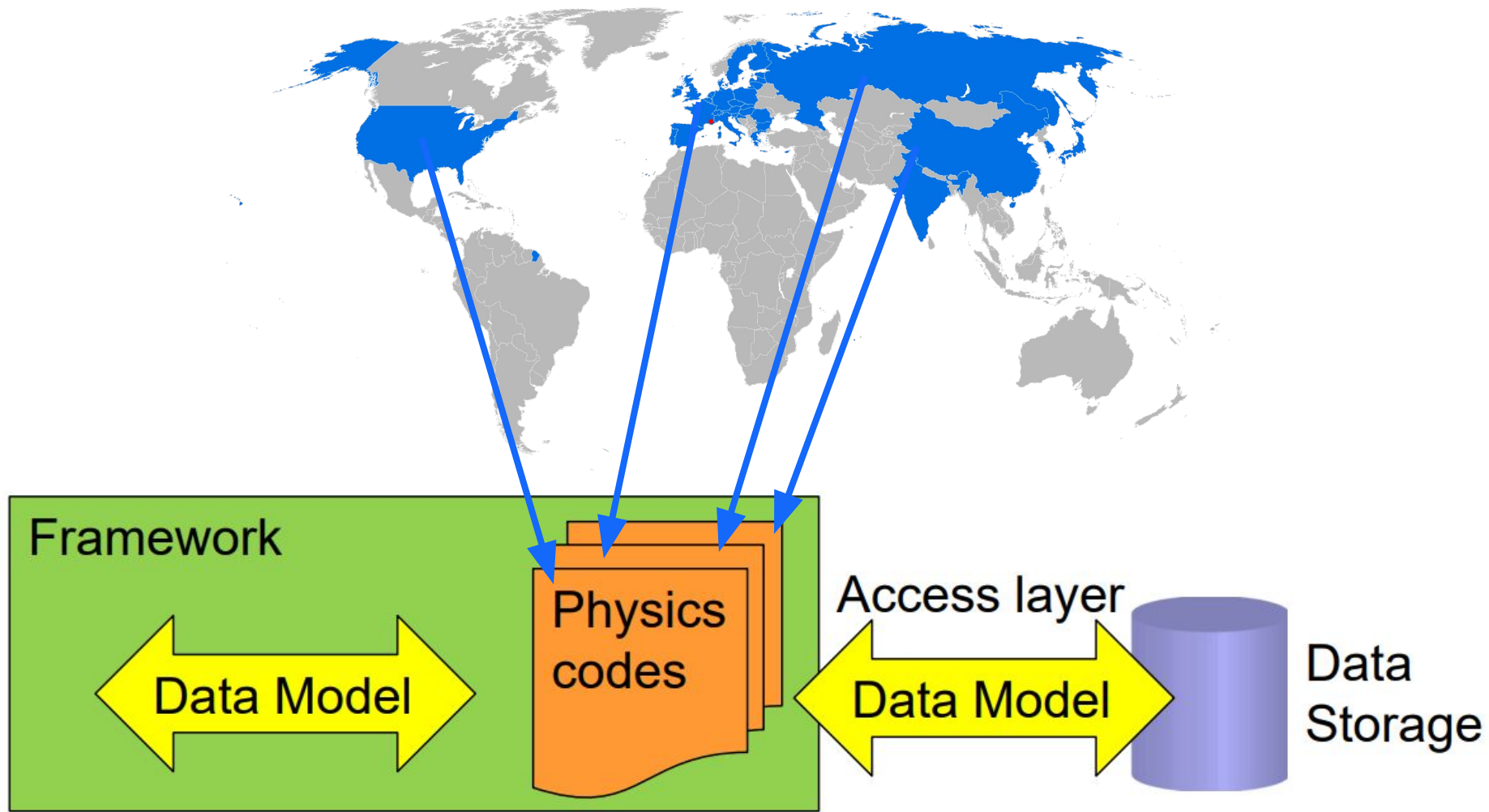
Stage 1

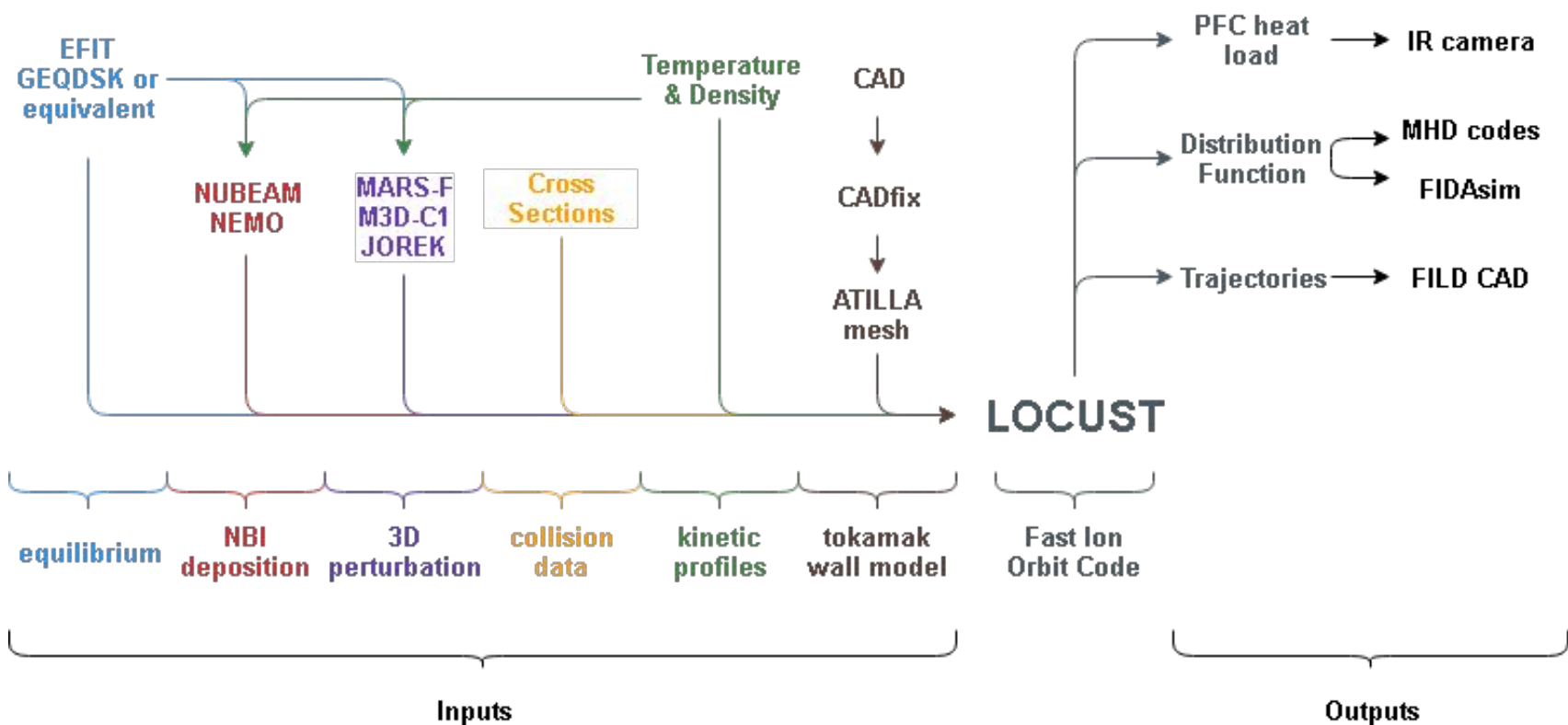


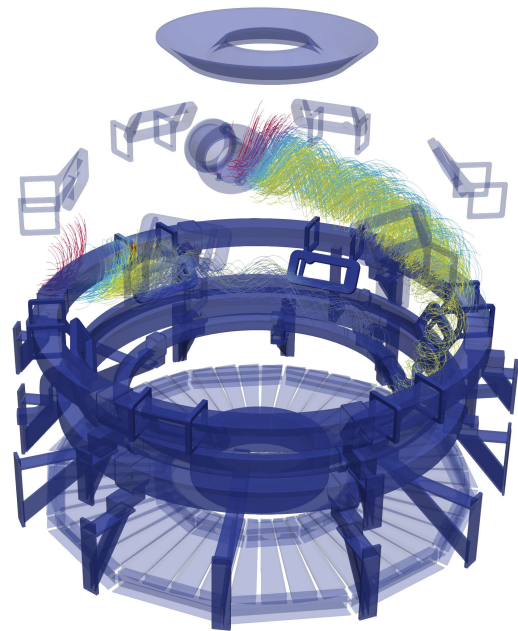
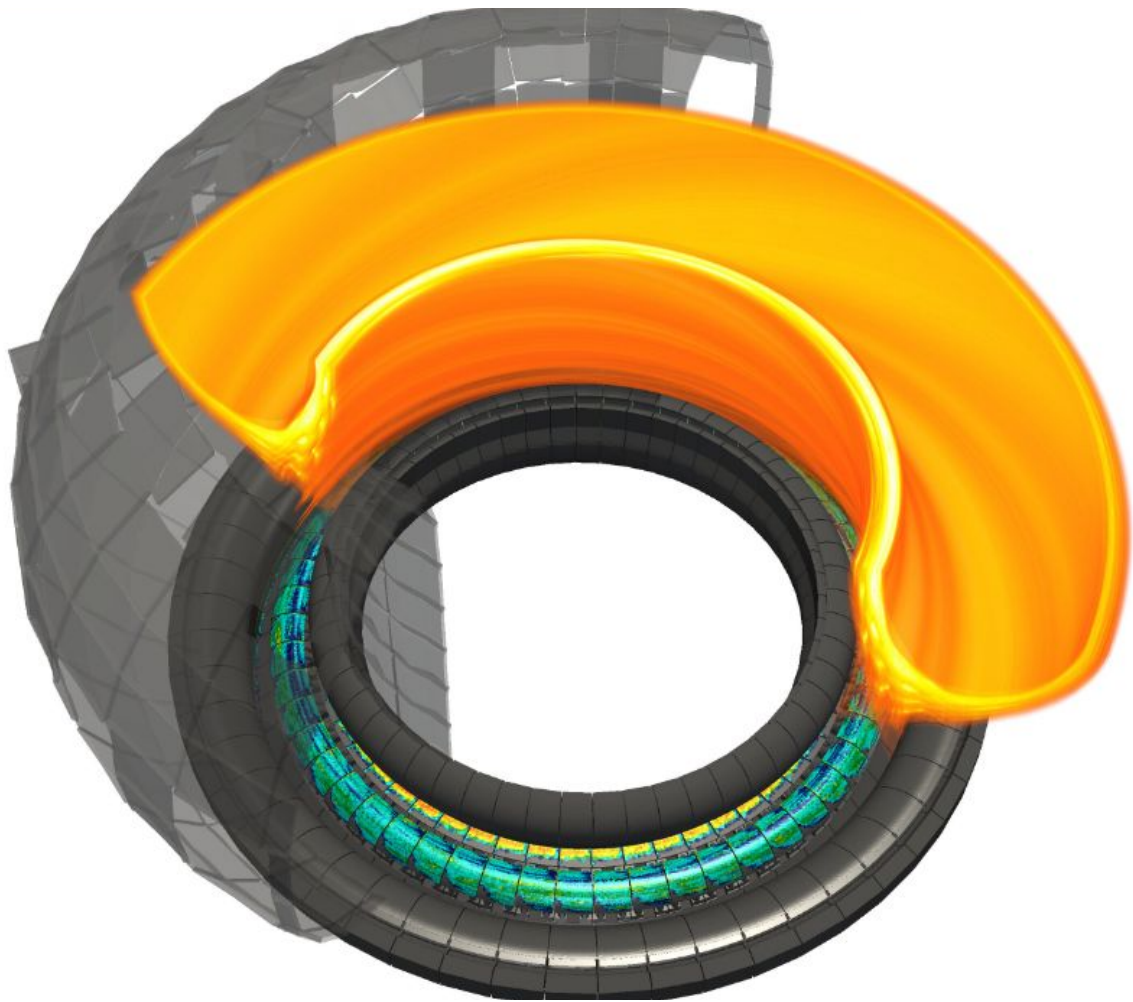
Stage 2



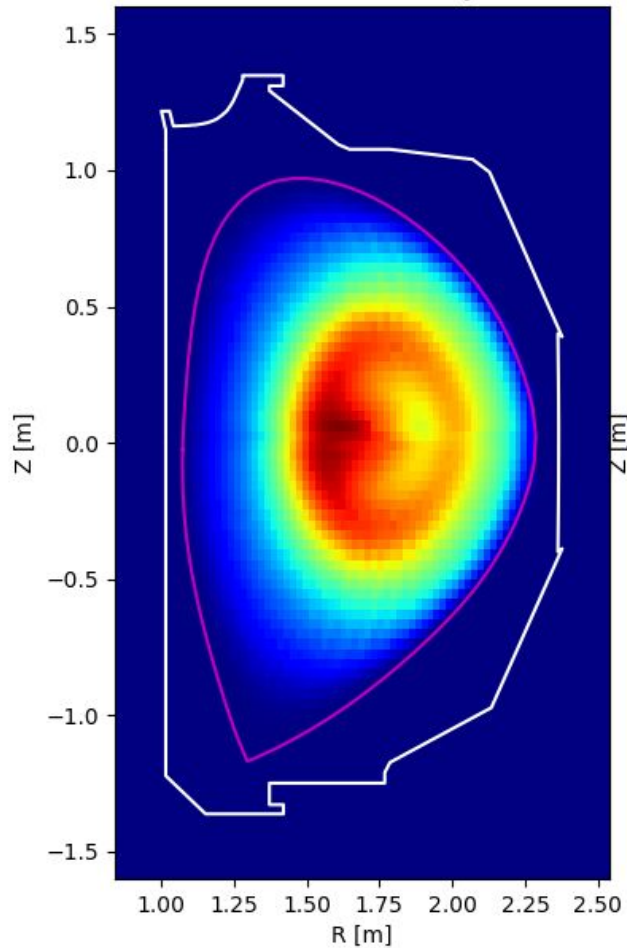




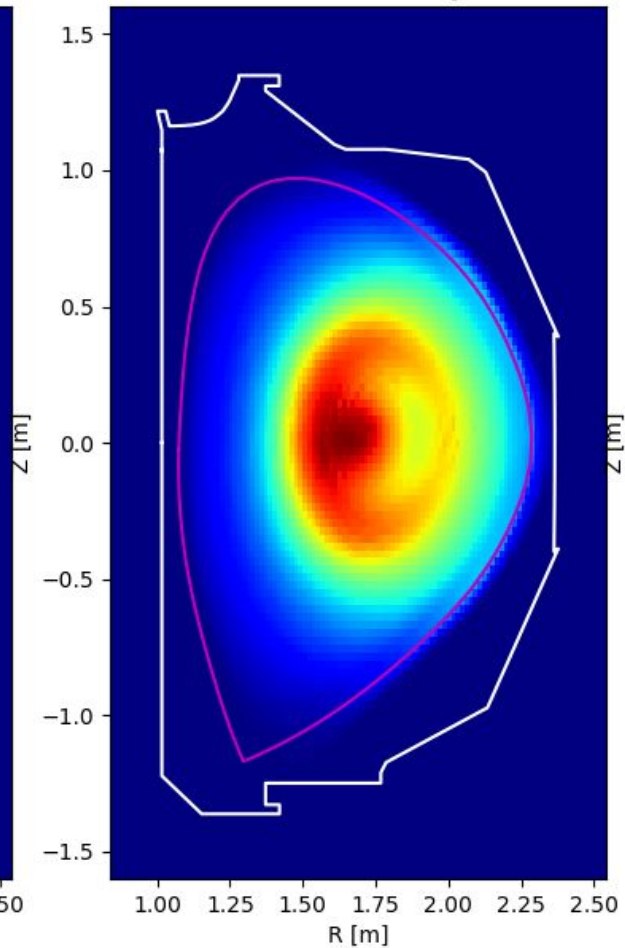




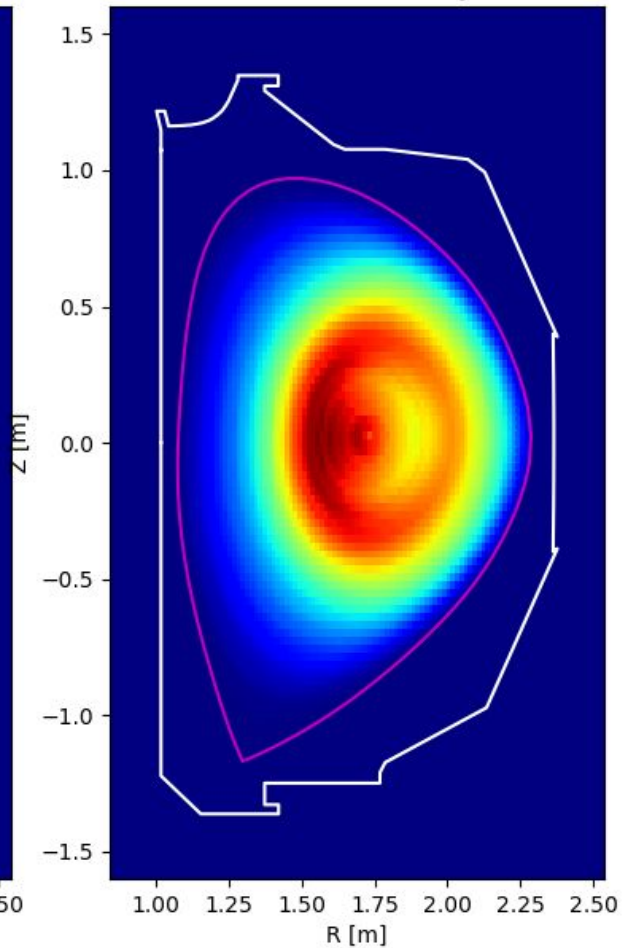
TRANSP fast ion density (0.1s)



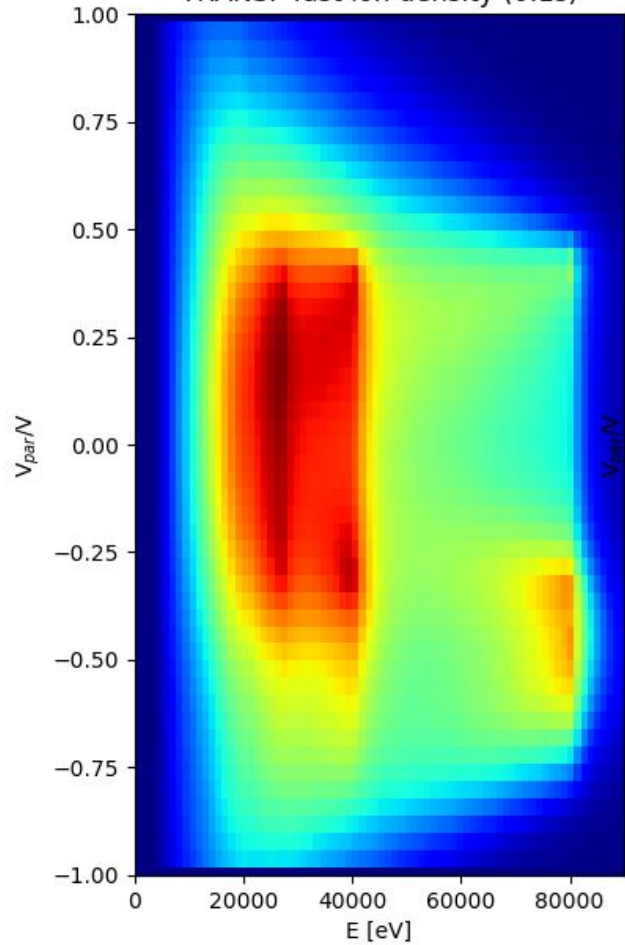
ASCOT fast ion density (0.1s)



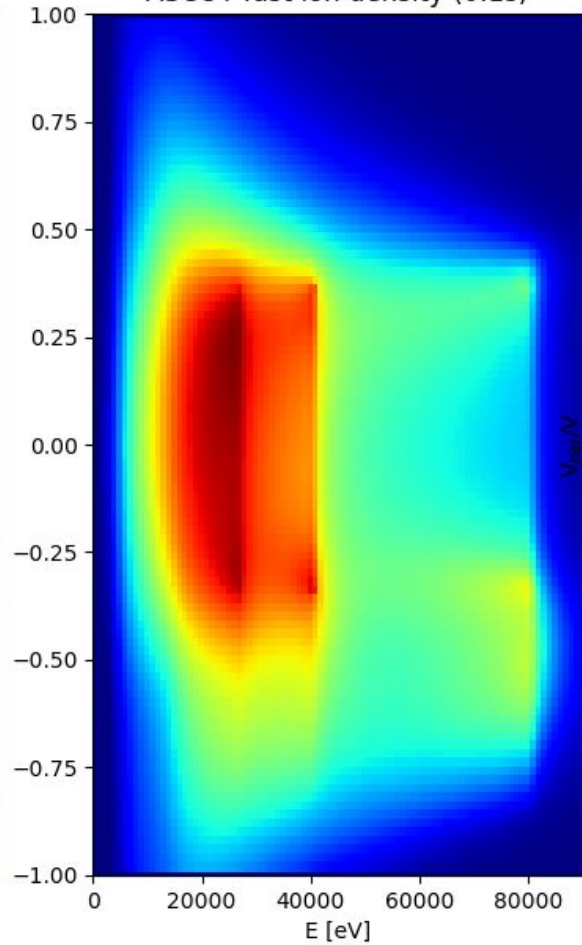
LOCUST fast ion density (0.1s)



TRANSP fast ion density (0.1s)



ASCOT fast ion density (0.1s)



LOCUST fast ion density (0.1s)

